

# uni**pro**<sup>®</sup>

Making your  
lights shine



**PRODUCT CATALOGUE**



**2022**



## Making your lights shine

Unipro Oy Ltd with its parent company Meka Pro Ltd are both part of the privately owned Propria Group in Finland. Unipro ([www.unipro.fi](http://www.unipro.fi)) is specialized in manufacturing high quality lighting track products. Unipro products are already sold in over 50 countries. New and modern factory is located in Hämeenlinna, Finland, close to all the main routes and harbours.

The unipro® lighting track system is a great choice for offices, shopping centers, shops, museums, gyms and restaurants - only your imagination is the limit.


Unipro is the word for high quality products, modern design and smooth installation. The unipro® lighting track system offers flexibility in designing advanced lighting systems.

Our system includes surface and recessed 3-phase and Control-DALI lighting tracks, adapters and a wide range of mounting accessories.

Universal and modular design is easy to expand and adapt to the customer's wishes and requirements.

L-corners are adjustable and reversible with changeable earthing for fast and easy installation.

In fire-safety situations halogen-free lighting track parts will not release any flammable gases harmful for health. It is advisable to use halogen free products especially in premises full of people and challenging evacuation conditions.



## 10 days delivery

Unipro wants to offer the best possible service to its customers and as we know, for them, time is money. Therefore delivering products in a fast and timely fashion is our priority. We heard our customers and are proud to be able to offer the most common tracks and colors with a 10 Day Delivery and a fixed freight.

With this offer we are able to help Unipro customer to meet their most urgent delivery and installation needs.



## PVC halogen free products

What are halogens and why should you care? Elements like fluorine, chlorine, bromine, iodine and astatine are found in many chemical compounds like in PVC (polyvinylchloride). As we are aware of, PVC is used in many technical products to make them more durable. PVC is also used for insulation while other halogens are added to improve flame protection. However, halogens are harmful to human health. Particularly, in a situation where halogenated plastics and particularly PVC, burn. In a case of fire these halogens react with water or fluids and create a dangerous hydrochloric acid, other mixtures of dioxins and toxic chemicals. These can seriously damage health or even cause some mortalities.

This is why all Unipro connectors, adapters and 3-phase DALI tracks are manufactured completely using PVC- and Halogen free plastics.

## Plastic free packages

Humans are sinking the world with plastic. This is an enormous challenge for our environment. We need to act and that is why we at Unipro decided to remove as much plastic as possible from our packages. Today Unipro has reduced the use of plastic already by 1Tonne annually. This was achieved by re-designing the adapter-, connector- and track packages.



## Smart partners

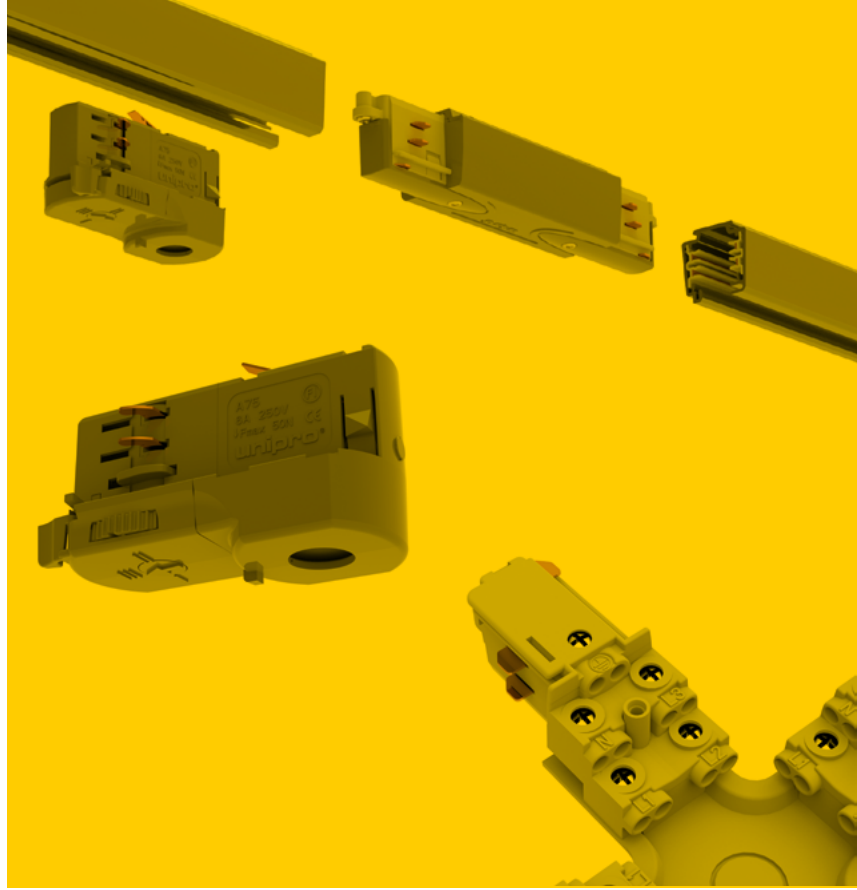
Most recently Unipro has partnered with Helvar to offer their intelligent solutions to the 3-phase DALI track system. The new Helvar ActiveAhead® is a truly intelligent and scalable wireless lighting solution. Its unique self-learning capabilities give ultimate efficiency in setup and operations. ActiveAhead® will continuously learn and generate insights, maximising positive impact on wellbeing and optimising your ever-evolving building. Helvar ActiveAhead® is the perfect solution for offices, warehouses, stairways and parking garages.

# Universal solutions

The unipro® lighting tracks are designed for surface and recessed installations. All Unipro tracks are compatible with most common adapters. Flat or round copper conductors provide the best possible electrical contact and require minimum work before installation.

The unipro® 3-phase adapters A75 (5 kg) and A90 (10 kg) are compatible with most 3-phase lighting tracks. Also the A90C (10 kg) 3-phase DALI adapter is suitable with most compatible DALI tracks in the market. The A200 Driver adapter family offers the latest technology with the integrated drivers.

All connection units have reliable and easy-to-use screw terminals for 2.5mm<sup>2</sup> solid or braided wires. Power supply options are available on most of the connector pieces, such as MCU, L-corners, T-piece and X-unit.



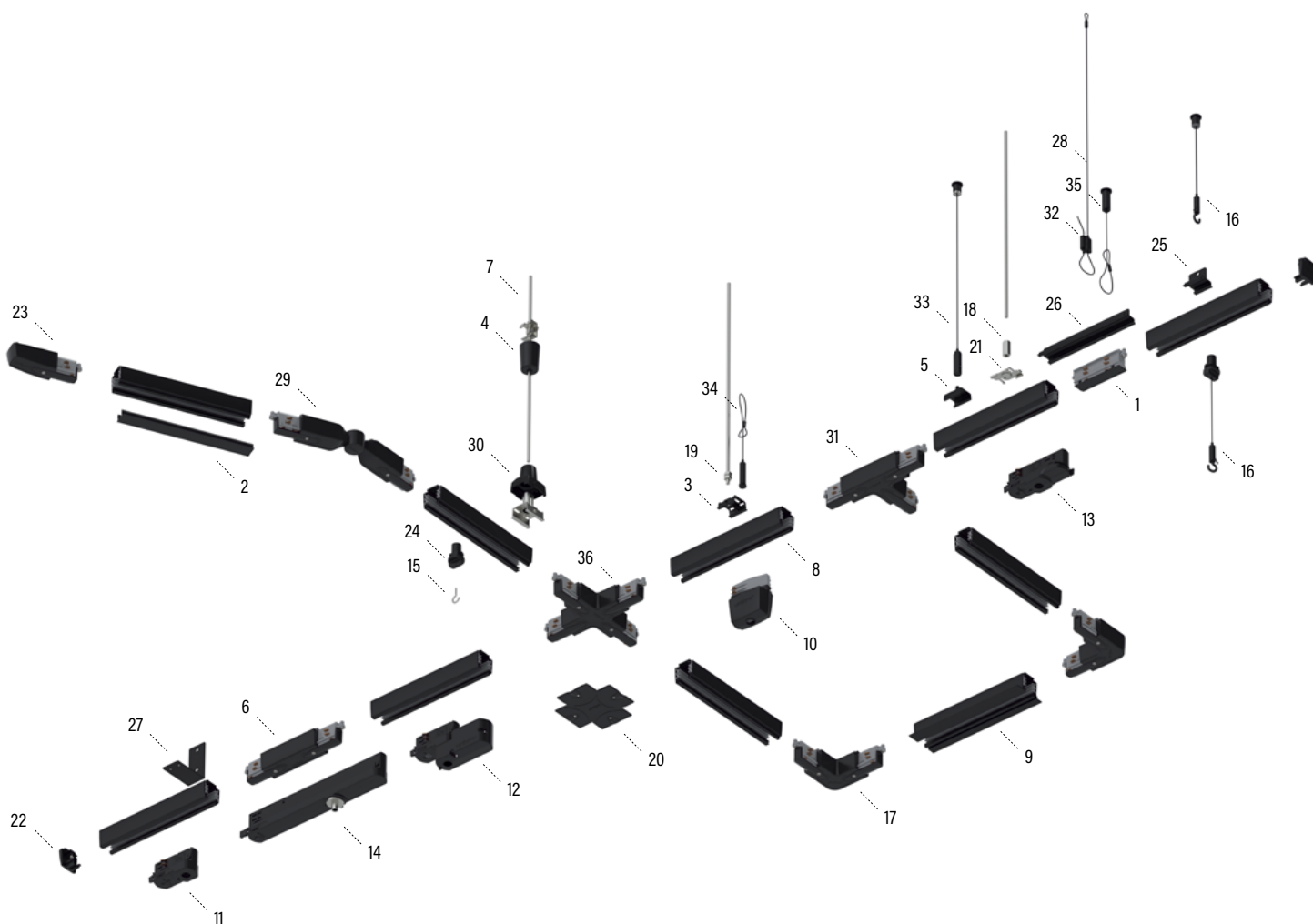
## Wide selection of track lengths

Unipro offers a wide selection of track lengths suitable for various solutions. Lengths vary from 1,2 m to 4,8m and this allows the designers and architects to maximize the different possibilities in their design. We can also provide special requests as made-to-measure lengths accordingly.

## Easy to install

The suspension parts for Unipro tracks can be used for all track products. They are easy to use and can be installed even without any special tools. Many wires are available also in white and black giving the suspended track solutions the perfect finish for your customer.



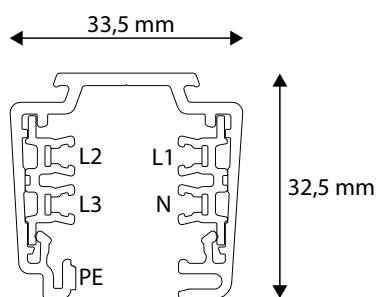
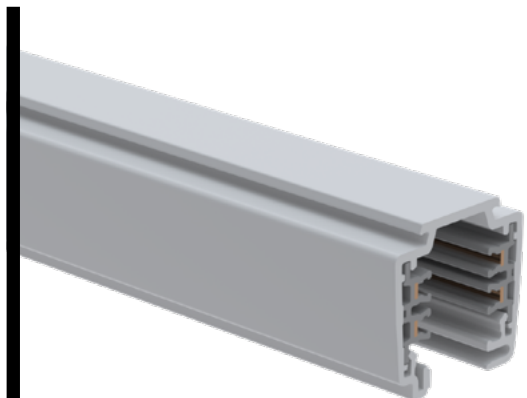


| NO. | TYPE                                     | ITEM           | PAGE |
|-----|--|----------------|------|
| 1   | Joining unit                             | UNIPRO JU3     | 8    |
| 2   | Cover strip                              | UNIPRO CS3B    | 8    |
| 3   | Ceiling bracket                          | UNIPRO CB3B    | 23   |
| 4   | Ceiling bracket with cup                 | UNIPRO CBC B   | 24   |
| 5   | Quick ceiling bracket                    | UNIPRO QCB B   | 23   |
| 6   | Middle connection unit                   | UNIPRO MCU3B   | 9    |
| 7   | Threaded rod M6 L=1m                     | GT-6 L=1000 EG | 27   |
| 8   | 3-phase lighting track                   | UNIPRO T32B    | 6    |
| 9   | 3-phase lighting track, recessed         | UNIPRO T32FB   | 7    |
| 10  | Power outlet adapter                     | UNIPRO A100B   | 20   |
| 11  | Luminaire adapter                        | UNIPRO A75B    | 18   |
| 12  | Bluetooth control unit                   | UNIPRO A80BT B | 20   |
| 13  | Luminaire adapter                        | UNIPRO A90B    | 18   |
| 14  | In-Track Driver adapter                  | UNIPRO A203B   | 19   |
| 15  | Suspension hook                          | UNIPRO SH      | 27   |
| 16  | Adjustable wire suspension set with hook | UNIPRO WS40H   | 22   |
| 17  | L-corner                                 | UNIPRO LC3B    | 9    |
| 18  | Extension nut for threaded rod M6        | JM M6 EG       | 27   |

| NO. | TYPE                               | ITEM           | PAGE |
|-----|------------------------------------|----------------|------|
| 19  | Nut for threaded rod M6            | MU M6 EG       | 27   |
| 20  | Cover plate                        | UNIPRO CP3B    | 8    |
| 21  | Quick connector                    | UNIPRO QC3G    | 23   |
| 22  | End cap                            | UNIPRO EC3B    | 8    |
| 23  | Connection unit                    | UNIPRO CU3AB   | 9    |
| 24  | Suspension clamp                   | UNIPRO SC3B    | 24   |
| 25  | Pendant bracket                    | UNIPRO PB B    | 23   |
| 26  | Pendant coupler                    | UNIPRO PC B    | 24   |
| 27  | Wall bracket                       | UNIPRO WB B    | 24   |
| 28  | Ø1,5 mm wire with loop             | UNIPRO WL40 B  | 26   |
| 29  | Adjustable corner                  | UNIPRO ALC3B   | 10   |
| 30  | Adjustable pendant bracket         | UNIPRO PBA B   | 24   |
| 31  | T-piece                            | UNIPRO TA3AB   | 10   |
| 32  | Adjustable wire gripper            | UNIPRO WG B    | 26   |
| 33  | Adjustable wire suspension set     | UNIPRO WS40 B  | 25   |
| 34  | Adjustable wire set with loop wire | UNIPRO WS40L B | 25   |
| 35  | Adjustable wire set with loop wire | UNIPRO WSL40 B | 25   |
| 36  | X-piece                            | UNIPRO XA3B    | 10   |

# LIGHTING TRACK FOR SURFACE INSTALLATION

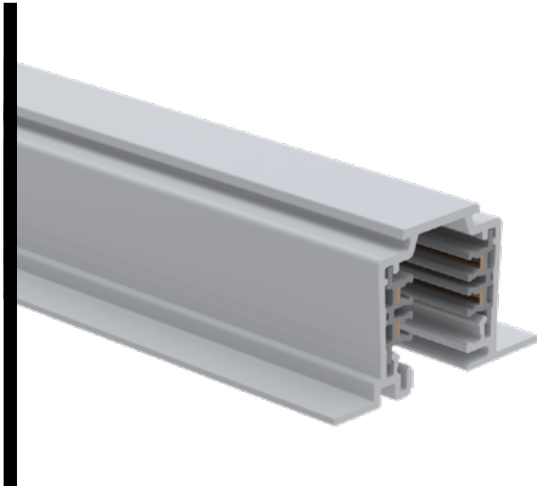
16 A | 250/400 VAC | 50 Hz | CLASS I IP20



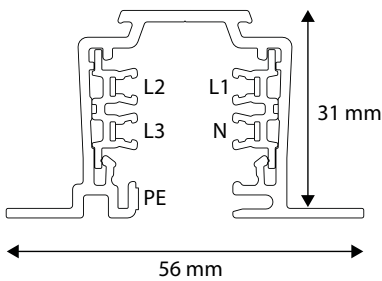
| CODE    | PRODUCT<br>x = stock product | WGT.<br>kg / pce | LENGTH<br>mm | COLOUR        | PACKAGE         |
|---------|------------------------------|------------------|--------------|---------------|-----------------|
| 1459160 | x UNIPRO T312W               | 0.94             | 1200         | White         | 10 PCE / 12 MTR |
| 1459102 | UNIPRO T32W                  | 1.567            | 2000         | White         | 10 PCE / 20 MTR |
| 1459292 | x UNIPRO T324W               | 1.88             | 2400         | White         | 10 PCE / 24 MTR |
| 1459103 | UNIPRO T33W                  | 2.348            | 3000         | White         | 10 PCE / 30 MTR |
| 1459305 | x UNIPRO T336W               | 2.82             | 3600         | White         | 10 PCE / 36 MTR |
| 1459315 | x UNIPRO T348W               | 3.76             | 4800         | White         | 10 PCE / 48 MTR |
| 1459166 | x UNIPRO T312G               | 0.94             | 1200         | Grey          | 10 PCE / 12 MTR |
| 1459232 | UNIPRO T32G                  | 1.567            | 2000         | Grey          | 10 PCE / 20 MTR |
| 1459293 | x UNIPRO T324G               | 1.88             | 2400         | Grey          | 10 PCE / 24 MTR |
| 1459233 | UNIPRO T33G                  | 2.348            | 3000         | Grey          | 10 PCE / 30 MTR |
| 1459306 | x UNIPRO T336G               | 2.82             | 3600         | Grey          | 10 PCE / 36 MTR |
| 1459316 | x UNIPRO T348G               | 3.76             | 4800         | Grey          | 10 PCE / 48 MTR |
| 1459159 | x UNIPRO T312B               | 0.94             | 1200         | Black         | 10 PCE / 12 MTR |
| 1459302 | UNIPRO T32B                  | 1.567            | 2000         | Black         | 10 PCE / 20 MTR |
| 1459180 | x UNIPRO T324B               | 1.88             | 2400         | Black         | 10 PCE / 24 MTR |
| 1459303 | UNIPRO T33B                  | 2.348            | 3000         | Black         | 10 PCE / 30 MTR |
| 1459301 | x UNIPRO T336B               | 2.82             | 3600         | Black         | 10 PCE / 36 MTR |
| 1459311 | x UNIPRO T348B               | 3.76             | 4800         | Black         | 10 PCE / 48 MTR |
| 1459185 | UNIPRO T324AD                | 1.88             | 2400         | Anodized grey | 10 PCE / 24 MTR |
| 1459320 | UNIPRO T348AD                | 3.76             | 4800         | Anodized grey | 10 PCE / 48 MTR |
| 1459186 | UNIPRO T324S                 | 1.88             | 2400         | RAL Classic   | 10 PCE / 24 MTR |

# RECESSED LIGHTING TRACK

16 A | 250/400 VAC | 50 Hz | CLASS 1 IP20

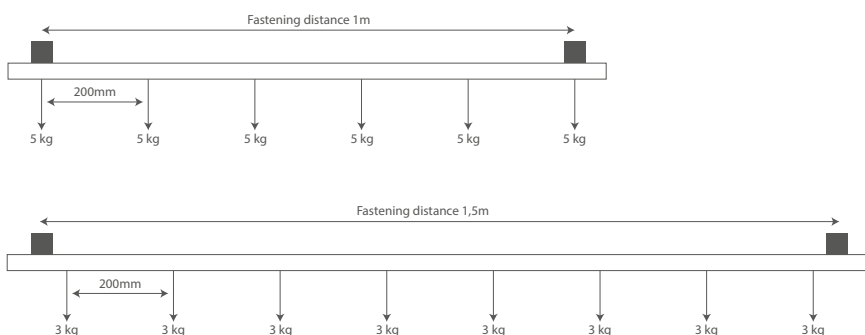


| CODE    | PRODUCT<br><small>x = stock product</small> | WGT.<br>kg / pce | LENGTH<br>mm | COLOUR | PACKAGE          |
|---------|---|------------------|--------------|--------|------------------|
| 1459223 | UNIPRO T324FW                               | 2.142            | 2400         | White  | 8 PCE / 19.2 MTR |
| 1459330 | UNIPRO T348FW                               | 4.28             | 4800         | White  | 8 PCE / 38.4 MTR |
| 1459182 | UNIPRO T324FG                               | 2.142            | 2400         | Grey   | 8 PCE / 19.2 MTR |
| 1459332 | UNIPRO T348FG                               | 4.28             | 4800         | Grey   | 8 PCE / 38.4 MTR |
| 1459220 | UNIPRO T324FB                               | 2.142            | 2400         | Black  | 8 PCE / 19.2 MTR |
| 1459329 | UNIPRO T348FB                               | 4.28             | 4800         | Black  | 8 PCE / 38.4 MTR |



## unipro® T3 lighting tracks

|                           |  |
|---------------------------|--|
| <b>Materials</b>          | The lighting track frame is made of aluminium and the insulation is made of plastic. The phase and neutral wires are made of 2.5mm <sup>2</sup> rectangular copper, protective earthing is achieved with the lighting track's aluminium frame.<br><br>Surface treatment options are painted white (RAL9003), grey (RAL7040), black (RAL9005) and anodised natural colour. Other RAL Classic paint colours. |
| <b>Wires</b>              | Three phase wires (L1, L2 and L3), neutral wire (N) and protective earthing (PE).  |
| <b>Protection class</b>   | Protection class 1 IP20  |
| <b>Quality and safety</b> | Tested in compliance with EN60570 and EN60598.   |
| <b>Other</b>              | Can be cut to the appropriate length on site. Copper wires do not need to be bent or otherwise worked on after cutting.  |



## END CAP EC3

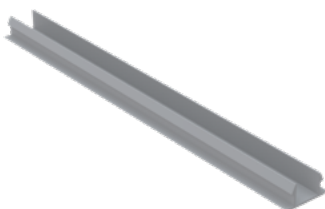
End cap for 3-phase lighting tracks.



| ENR     | PRODUCT<br>x = stock product | WGT.<br>kg / pce | COLOUR | PACKAGE       |
|---------|------------------------------|------------------|--------|---------------|
| 1459181 | x UNIPRO EC3W                | 0.006            | White  | 10 PCE / 1 BG |
| 1459281 | x UNIPRO EC3G                | 0.006            | Grey   | 10 PCE / 1 BG |
| 1459381 | x UNIPRO EC3B                | 0.006            | Black  | 10 PCE / 1 BG |

## COVER STRIP L=2M CS3

Cover strip for 3-phase and Control-DALI lighting tracks. Length 2m.



| ENR     | PRODUCT<br>x = stock product | WGT.<br>kg / pce | COLOUR | PACKAGE        |
|---------|------------------------------|------------------|--------|----------------|
| 1459444 | x UNIPRO CS3W                | 0.125            | White  | 8 PCE / 16 MTR |
| 1459445 | x UNIPRO CS3B                | 0.125            | Black  | 8 PCE / 16 MTR |

## COVER PLATE CP3

Cover plate for recessed lighting track systems, to cover the CU and MCU connection units as well as the L-, T- and X-pieces. Can be folded to the suitable shape during installation.



| ENR     | PRODUCT<br>x = stock product | WGT.<br>kg / pce | COLOUR | PACKAGE       |
|---------|------------------------------|------------------|--------|---------------|
| 1459191 | x UNIPRO CP3W                | 0.017            | White  | 10 PCE / 1 BG |
| 1459291 | x UNIPRO CP3G                | 0.017            | Grey   | 10 PCE / 1 BG |
| 1459391 | x UNIPRO CP3B                | 0.017            | Black  | 10 PCE / 1 BG |

## JOINTING UNIT JU3

Jointing unit for 3-phase lighting tracks. Product comes with grey and black covers. A cover can be installed by pressing it on top of the jointing unit.

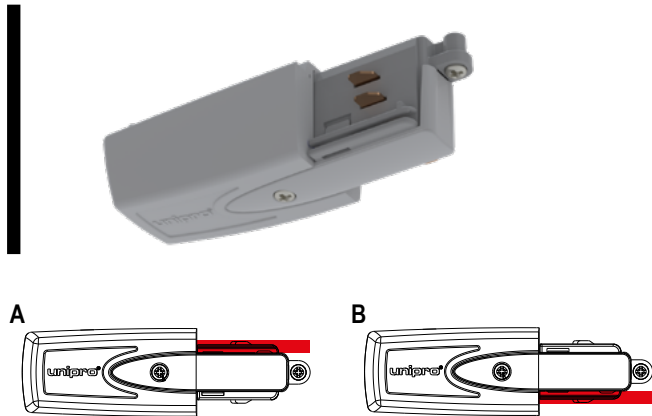


| ENR     | PRODUCT<br>x = stock product | WGT.<br>kg / pce | PACKAGE     |
|---------|------------------------------|------------------|-------------|
| 1459199 | x UNIPRO JU3                 | 0.043            | 10 PCE / BG |



## CONNECTION UNIT CU3

Power supply option for 3-phase lighting track systems. Two earthing options. Screw terminals for 3x1.5mm<sup>2</sup> - 5x2.5mm<sup>2</sup> wires.



Please note! Earthing pictures taken from below.

| ENR     | PRODUCT<br>x = stock product | WGT.<br>kg / pce | COLOUR | PACKAGE       |
|---------|------------------------------|------------------|--------|---------------|
| 1459121 | x UNIPRO CU3AW               | 0.058            | White  | 10 PCE / 1 BG |
| 1459221 | x UNIPRO CU3AG               | 0.058            | Grey   | 10 PCE / 1 BG |
| 1459321 | x UNIPRO CU3AB               | 0.058            | Black  | 10 PCE / BG   |

|         |                |       |       |               |
|---------|----------------|-------|-------|---------------|
| 1459122 | x UNIPRO CU3BW | 0.058 | White | 10 PCE / 1 BG |
| 1459222 | x UNIPRO CU3BG | 0.058 | Grey  | 10 PCE / 1 BG |
| 1459322 | x UNIPRO CU3BB | 0.058 | Black | 10 PCE / 1 BG |

## MIDDLE CONNECTION UNIT MCU3

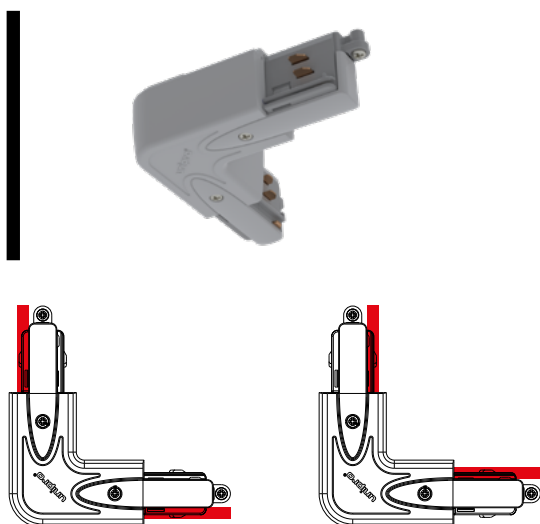
Power supply option for 3-phase lighting track systems. Screw terminals for 3x1.5mm<sup>2</sup> - 5x2.5mm<sup>2</sup> wires.



| ENR     | PRODUCT<br>x = stock product | WGT.<br>kg / pce | COLOUR | PACKAGE      |
|---------|------------------------------|------------------|--------|--------------|
| 1459131 | x UNIPRO MCU3W               | 0.104            | White  | 8 PCE / 1 BG |
| 1459231 | x UNIPRO MCU3G               | 0.104            | Grey   | 8 PCE / 1 BG |
| 1459331 | x UNIPRO MCU3B               | 0.104            | Black  | 8 PCE / 1 BG |

## L-CORNER LC3

Power supply option for 3-phase lighting track systems. Changeable earthing line position. Screw terminals for 3x1.5mm<sup>2</sup> - 5x2.5mm<sup>2</sup> wires.

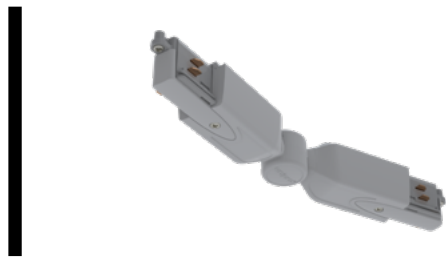


Please note! Earthing pictures taken from below.

| ENR     | PRODUCT<br>x = stock product | WGT.<br>kg / pce | COLOUR | PACKAGE      |
|---------|------------------------------|------------------|--------|--------------|
| 1459141 | x UNIPRO LC3W                | 0.105            | White  | 6 PCE / 1 BG |
| 1459241 | x UNIPRO LC3G                | 0.105            | Grey   | 6 PCE / 1 BG |
| 1459341 | x UNIPRO LC3B                | 0.105            | Black  | 6 PCE / 1 BG |

# ADJUSTABLE CORNER ALC3

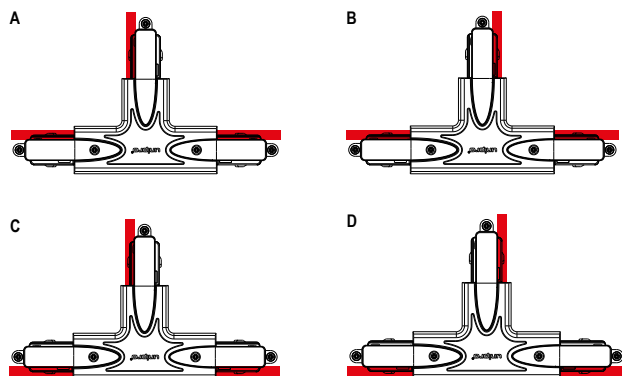
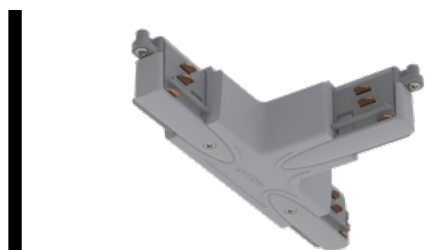
Horizontal adjustment range  $0 \pm 120^\circ$ .



| ENR     | PRODUCT<br>x = stock product | WGT.<br>kg / pce | COLOUR | PACKAGE      |
|---------|------------------------------|------------------|--------|--------------|
| 1459151 | x UNIPRO ALC3W               | 0.13             | White  | 4 PCE / 1 BG |
| 1459251 | x UNIPRO ALC3G               | 0.13             | Grey   | 4 PCE / 1 BG |
| 1459351 | x UNIPRO ALC3B               | 0.13             | Black  | 4 PCE / 1 BG |

# T-PIECE TA3

Power supply option for 3-phase lighting track systems. Four earthing options.  
Screw terminals for  $3 \times 1.5\text{mm}^2 - 5 \times 2.5\text{mm}^2$  wires.



Please note! Earthing pictures taken from below.

| ENR     | PRODUCT<br>x = stock product | WGT.<br>kg / pce | COLOUR | PACKAGE      |
|---------|------------------------------|------------------|--------|--------------|
| 1459161 | x UNIPRO TA3AW               | 0.15             | White  | 4 PCE / 1 BG |
| 1459261 | x UNIPRO TA3AG               | 0.15             | Grey   | 4 PCE / 1 BG |
| 1459361 | x UNIPRO TA3AB               | 0.15             | Black  | 4 PCE / 1 BG |

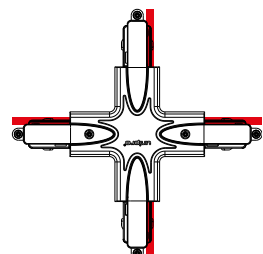
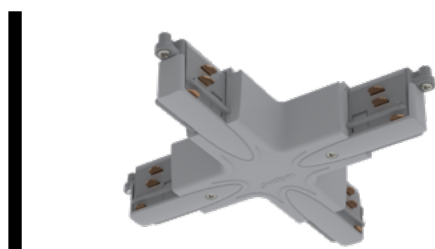
|         |                |      |       |              |
|---------|----------------|------|-------|--------------|
| 1459162 | x UNIPRO TA3BW | 0.15 | White | 4 PCE / 1 BG |
| 1459262 | x UNIPRO TA3BG | 0.15 | Grey  | 4 PCE / 1 BG |
| 1459362 | x UNIPRO TA3BB | 0.15 | Black | 4 PCE / 1 BG |

|         |                |      |       |              |
|---------|----------------|------|-------|--------------|
| 1459163 | x UNIPRO TA3CW | 0.15 | White | 4 PCE / 1 BG |
| 1459263 | x UNIPRO TA3CG | 0.15 | Grey  | 4 PCE / 1 BG |
| 1459363 | x UNIPRO TA3CB | 0.15 | Black | 4 PCE / 1 BG |

|         |                |      |       |              |
|---------|----------------|------|-------|--------------|
| 1459164 | x UNIPRO TA3DW | 0.15 | White | 4 PCE / 1 BG |
| 1459264 | x UNIPRO TA3DG | 0.15 | Grey  | 4 PCE / 1 BG |
| 1459364 | x UNIPRO TA3DB | 0.15 | Black | 4 PCE / 1 BG |

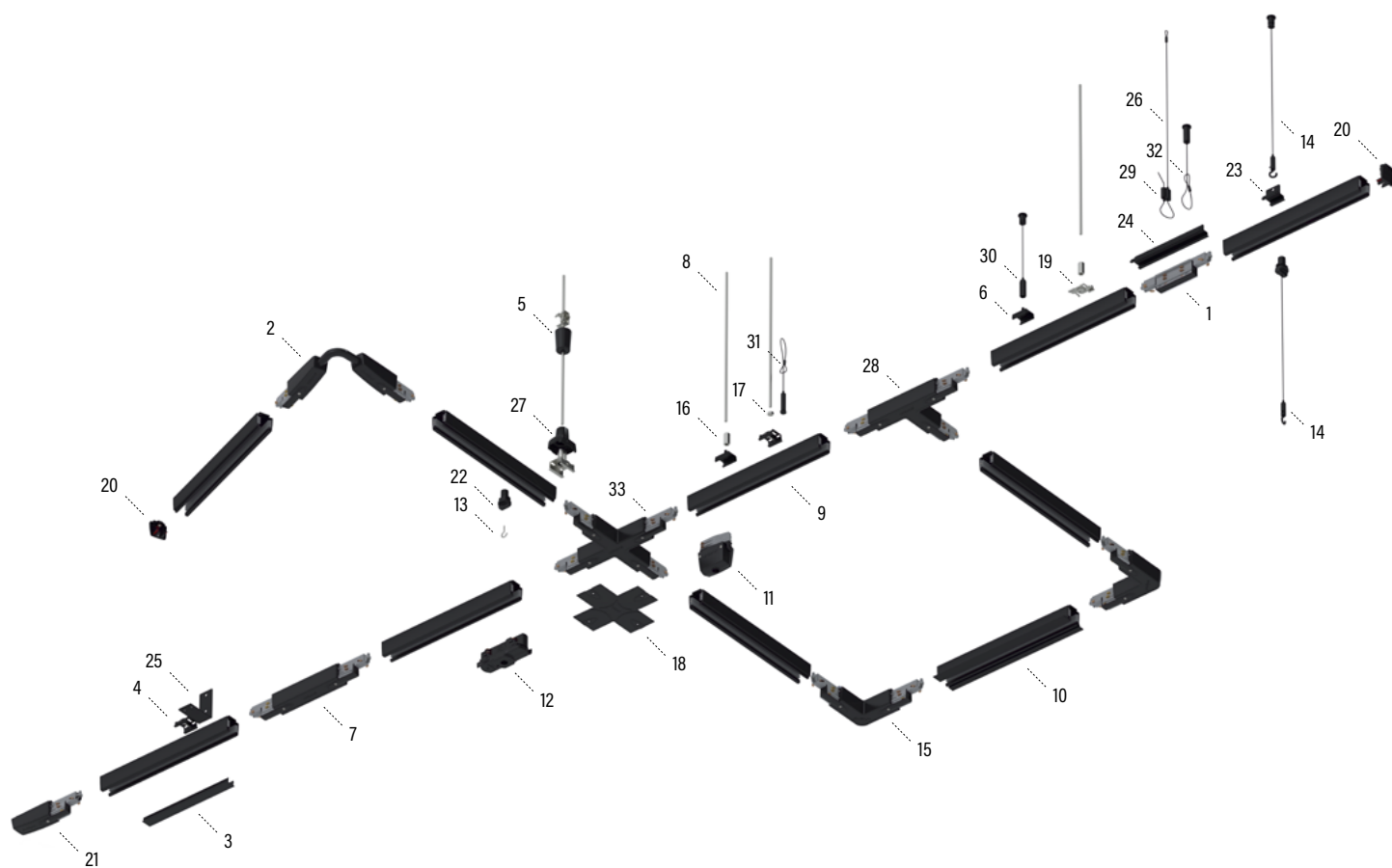
# X-PIECE XA3

Power supply option for 3-phase lighting track systems. Screw terminals for  $3 \times 1.5\text{mm}^2 - 5 \times 2.5\text{mm}^2$  wires.



Please note! Earthing pictures taken from below.

| ENR     | PRODUCT<br>x = stock product | WGT.<br>kg / pce | COLOUR | PACKAGE      |
|---------|------------------------------|------------------|--------|--------------|
| 1459171 | x UNIPRO XA3W                | 0.196            | White  | 2 PCE / 1 BG |
| 1459271 | x UNIPRO XA3G                | 0.196            | Grey   | 2 PCE / 1 BG |
| 1459371 | x UNIPRO XA3B                | 0.196            | Black  | 2 PCE / 1 BG |



| NO. | TYPE                                     | ITEM           | PAGE |
|-----|--|----------------|------|
| 1   | Control-DALI Jointing unit               | UNIPRO CJU3    | 15   |
| 2   | Control-DALI Adjustable corner           | UNIPRO CFC3 B  | 15   |
| 3   | Cover strip L=2m                         | UNIPRO CS3B    | 14   |
| 4   | Ceiling bracket                          | UNIPRO CB3B    | 23   |
| 5   | Ceiling bracket with cup                 | UNIPRO CBC B   | 24   |
| 6   | Quick ceiling bracket                    | UNIPRO QCB B   | 23   |
| 7   | Control-DALI Middle connection unit      | UNIPRO CMCU3B  | 15   |
| 8   | Threaded rod M6 L=1m                     | GT-6 L=1000 EG | 27   |
| 9   | Control-DALI lighting track              | UNIPRO TC32B   | 12   |
| 10  | Control-DALI lighting track, recessed    | UNIPRO TC32FB  | 13   |
| 11  | Power outlet adapter                     | UNIPRO A100B   | 20   |
| 12  | Control-DALI Luminaire adapter           | UNIPRO A90CB   | 18   |
| 13  | Suspension hook                          | UNIPRO SH      | 27   |
| 14  | Adjustable wire suspension set with hook | UNIPRO WS40H   | 25   |
| 15  | Control-DALI L-corner                    | UNIPRO CLC3B   | 16   |
| 16  | Extension nut for threaded rod M6        | JM M6 EG       | 27   |
| 17  | Nut for threaded rod M6                  | MU M6 EG       | 27   |

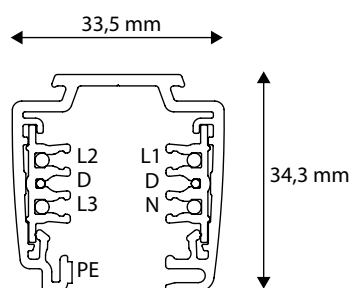
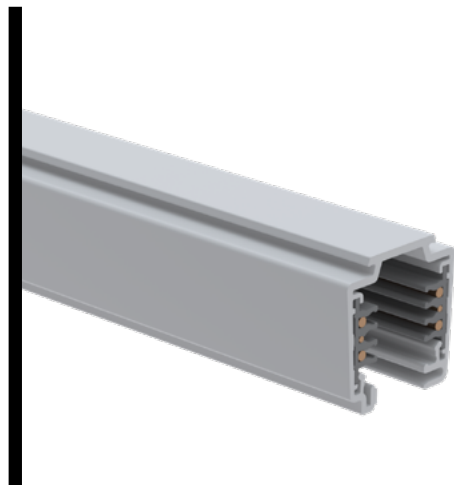
| NO. | TYPE                               | ITEM           | PAGE |
|-----|------------------------------------|----------------|------|
| 18  | Control-DALI Cover plate           | UNIPRO CCP3 B  | 14   |
| 19  | Quick connector                    | UNIPRO QC3G    | 23   |
| 20  | Control-DALI End cap               | UNIPRO CEC3B   | 14   |
| 21  | Control-DALI Connection unit       | UNIPRO CCU3AB  | 15   |
| 22  | Suspension clamp                   | UNIPRO SC3B    | 24   |
| 23  | Pendant bracket                    | UNIPRO PB B    | 23   |
| 24  | Pendant coupler                    | UNIPRO PC B    | 24   |
| 25  | Wall bracket                       | UNIPRO WB B    | 24   |
| 26  | Ø1,5 mm wire with loop             | UNIPRO WL40 B  | 26   |
| 27  | Adjustable pendant bracket         | UNIPRO PBA B   | 24   |
| 28  | Control-DALI T-piece               | UNIPRO CTA3AB  | 16   |
| 29  | Adjustable wire gripper            | UNIPRO WG B    | 26   |
| 30  | Adjustable wire suspension set     | UNIPRO WS40 B  | 25   |
| 31  | Adjustable wire set with loop wire | UNIPRO WS40L B | 25   |
| 32  | Adjustable wire set with loop wire | UNIPRO WSL40 B | 25   |
| 33  | Control-DALI X-piece               | UNIPRO CXA3B   | 17   |

# CONTROL-DALI LIGHTING TRACK FOR SURFACE INSTALLATION

Control-DALI lighting track for surface installation.

16 A, (250/400) VAC, 50 Hz, FELV ≤ 50VAC ≤ 1A, CLASS 1 IP20.

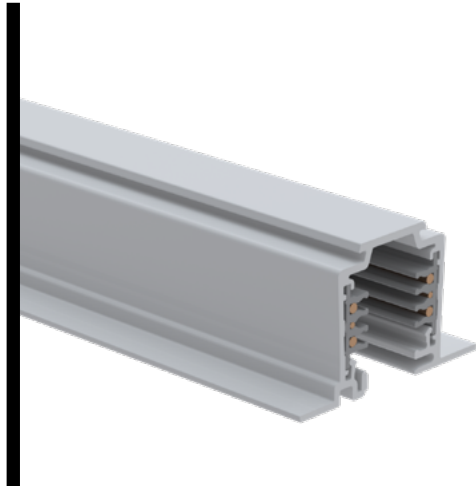
Free of halogens and PVCs.



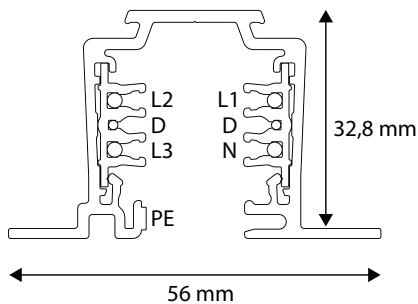
| CODE    | PRODUCT<br>x = stock product | WGT.<br>kg / pce | LENGTH<br>mm | COLOUR        | PACKAGE         |
|---------|------------------------------|------------------|--------------|---------------|-----------------|
| 1459243 | x UNIPRO TC312W              | 1.075            | 1200         | White         | 10 PCE / 12 MTR |
| 1459107 | UNIPRO TC32W                 | 1.792            | 2000         | White         | 10 PCE / 20 MTR |
| 1459253 | x UNIPRO TC324W              | 2.15             | 2400         | White         | 10 PCE / 24 MTR |
| 1459108 | UNIPRO TC33W                 | 2.763            | 3000         | White         | 10 PCE / 30 MTR |
| 1459336 | x UNIPRO TC336W              | 3.24             | 3600         | White         | 10 PCE / 36 MTR |
| 1459109 | UNIPRO TC34W                 | 3.684            | 4000         | White         | 10 PCE / 40 MTR |
| 1459340 | x UNIPRO TC348W              | 4.32             | 4800         | White         | 10 PCE / 48 MTR |
| 1459294 | x UNIPRO TC312G              | 1.075            | 1200         | Grey          | 10 PCE / 24 MTR |
| 1459237 | UNIPRO TC32G                 | 1.792            | 2000         | Grey          | 10 PCE / 20 MTR |
| 1459254 | x UNIPRO TC324G              | 2.15             | 2400         | Grey          | 10 PCE / 24 MTR |
| 1459238 | UNIPRO TC33G                 | 2.763            | 3000         | Grey          | 10 PCE / 30 MTR |
| 1459337 | x UNIPRO TC336G              | 3.24             | 3600         | Grey          | 10 PCE / 36 MTR |
| 1459239 | UNIPRO TC34G                 | 3.684            | 4000         | Grey          | 10 PCE / 40 MTR |
| 1459342 | x UNIPRO TC348G              | 4.32             | 4800         | Grey          | 10 PCE / 48 MTR |
| 1459242 | x UNIPRO TC312B              | 1.075            | 1200         | Black         | 10 PCE / 12 MTR |
| 1459307 | UNIPRO TC32B                 | 1.792            | 2000         | Black         | 10 PCE / 20 MTR |
| 1459250 | x UNIPRO TC324B              | 2.15             | 2400         | Black         | 10 PCE / 24 MTR |
| 1459308 | UNIPRO TC33B                 | 2.763            | 3000         | Black         | 10 PCE / 30 MTR |
| 1459334 | x UNIPRO TC336B              | 3.24             | 3600         | Black         | 10 PCE / 36 MTR |
| 1459309 | UNIPRO TC34B                 | 3.684            | 4000         | Black         | 10 PCE / 40 MTR |
| 1459339 | x UNIPRO TC348B              | 4.32             | 4800         | Black         | 10 PCE / 48 MTR |
| 1459207 | UNIPRO TC32AD                | 1.792            | 2000         | Anodized grey | 10 PCE / 20 MTR |
| 1459259 | UNIPRO TC324S                | 2.15             | 2400         | RAL Classic   | 10 PCE / 24 MTR |

# RECESSED UNIPRO CONTROL-DALI LIGHTING TRACK

Recessed Control-DALI lighting track.  
 16 A, (250/400) VAC, 50Hz, FELV ≤ 50VAC ≤ 1A, CLASS 1 IP20.



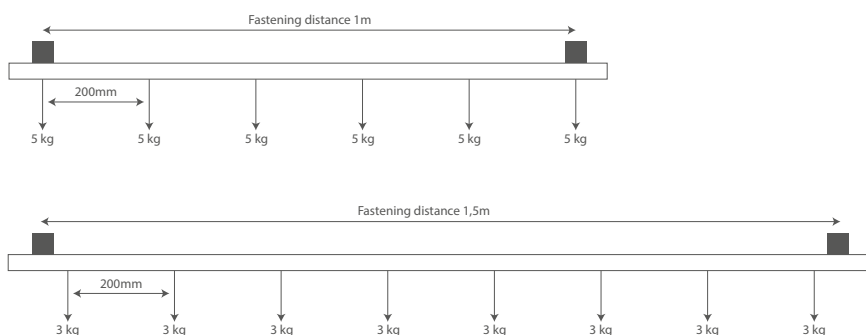
| CODE    | PRODUCT<br>x = stock product | WGT.<br>kg / pce | LENGTH<br>mm | COLOUR | PACKAGE          |
|---------|------------------------------|------------------|--------------|--------|------------------|
| 1459282 | UNIPRO TC324FW               | 2.477            | 2400         | White  | 8 PCE / 19.2 MTR |
| 1459350 | UNIPRO TC348FW               | 4.96             | 4800         | White  | 8 PCE / 38.4 MTR |
| 1459283 | UNIPRO TC324FG               | 2.477            | 2400         | Grey   | 8 PCE / 19.2 MTR |
| 1459352 | UNIPRO TC348FG               | 4.96             | 4800         | Grey   | 8 PCE / 38.4 MTR |
| 1459280 | UNIPRO TC324FB               | 2.477            | 2400         | Black  | 8 PCE / 19.2 MTR |
| 1459349 | UNIPRO TC348FB               | 4.96             | 4800         | Black  | 8 PCE / 38.4 MTR |



## unipro® Control-DALI TC3 lighting tracks

Control-DALI

|                           |   |
|---------------------------|---|
| <b>Materials</b>          | The lighting track frame is made of aluminium and the insulation is made of halogen and PVC-free plastic. The phase and neutral wires are made of 4mm <sup>2</sup> round copper, control wires are made of 1.5mm <sup>2</sup> round copper. Protective earthing is achieved with the lighting track's aluminium frame.<br><br>Surface treatment options are painted white (RAL9003), grey (RAL7040), black (RAL9005) and anodised natural colour.<br>Other RAL Classic paint colours are possible with custom orders. |
| <b>Wires</b>              | Three phase wires (L1, L2 and L3), neutral wire (N), protective earthing (PE) and data wires (D).   |
| <b>Protection class</b>   | Protection class 1 IP20   |
| <b>Quality and safety</b> | Tested in compliance with EN60570 and EN60598.  |
| <b>Other</b>              | Can be cut to the appropriate length on site. Phase wires must be shortened by 5mm with TCCP copper cutting pliers.   |



## COPPER CUTTING PLIERS FOR CONTROL-DALI TRACKS TCCP

Control-DALI lighting tracks' L1, L2, L3 and N wires need to be shortened 5mm after cutting the lighting track so that the required electrical and safety clearances and distances are fulfilled.



| CODE    | PRODUCT<br>x = stock product | WGT.<br>kg / pce | LENGTH<br>mm | PACKAGE |
|---------|------------------------------|------------------|--------------|---------|
| 1459190 | x UNIPRO TCCP                | 0.2              | 250          | 1 PCE   |

## CONTROL-DALI END CAP CEC3

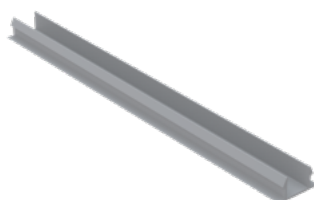
End cap for Control-DALI lighting tracks.



| CODE    | PRODUCT<br>x = stock product | WGT.<br>kg / pce | COLOUR | PACKAGE       |
|---------|------------------------------|------------------|--------|---------------|
| 1459196 | x UNIPRO CEC3W               | 0.006            | White  | 10 PCE / 1 BG |
| 1459285 | x UNIPRO CEC3G               | 0.006            | Grey   | 10 PCE / 1 BG |
| 1459385 | x UNIPRO CEC3B               | 0.006            | Black  | 10 PCE / 1 BG |

## COVER STRIP L=2M CS3

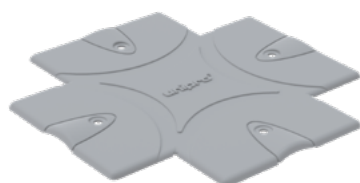
Cover strip for 3-phase and Control-DALI lighting tracks. Length 2m.



| CODE    | PRODUCT<br>x = stock product | WGT.<br>kg / pce | COLOUR | PACKAGE        |
|---------|------------------------------|------------------|--------|----------------|
| 1459444 | x UNIPRO CS3W                | 0.125            | White  | 8 PCE / 16 MTR |
| 1459445 | x UNIPRO CS3B                | 0.125            | Black  | 8 PCE / 16 MTR |

## CONTROL-DALI COVER PLATE CCP3

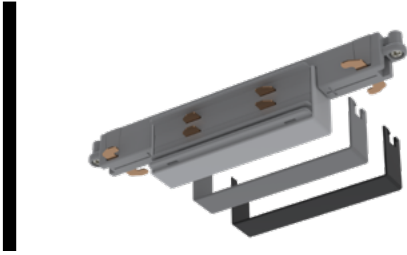
Cover plate for recessed Control-DALI lighting track systems, to cover the CCU and CMCU connection units as well as the L-, T- and X-pieces. Can be folded to the suitable shape during installation.



| CODE    | PRODUCT<br>x = stock product | WGT.<br>kg / pce | COLOUR | PACKAGE       |
|---------|------------------------------|------------------|--------|---------------|
| 1459101 | x UNIPRO CCP3 W              | 0.028            | White  | 10 PCE / 1 BG |
| 1459111 | x UNIPRO CCP3 B              | 0.028            | Black  | 10 PCE / 1 BG |
| 1459120 | x UNIPRO CCP3 G              | 0.028            | Grey   | 10 PCE / 1 BG |

## CONTROL-DALI JOINTING UNIT CJU3

Jointing unit for Control-DALI lighting track systems. Product comes with grey and black covers. A cover can be installed by pressing it on top of the jointing unit.



| CODE    | PRODUCT<br>x = stock product | WGT.<br>kg / pce | PACKAGE      |
|---------|------------------------------|------------------|--------------|
| 1459198 | x UNIPRO CJU3                | 0.053            | 8 PCE / 1 BG |

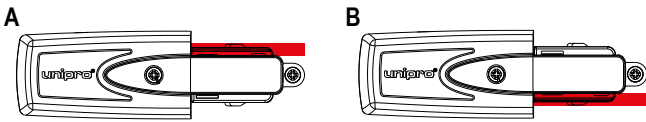
## CONTROL-DALI CONNECTION UNIT CCU3

Power supply option for Control-DALI track systems. Two earthing options. Screw terminals for 1.5mm<sup>2</sup> - 2.5mm<sup>2</sup> wires.



| CODE    | PRODUCT<br>x = stock product | WGT.<br>kg / pce | COLOUR | PACKAGE      |
|---------|------------------------------|------------------|--------|--------------|
| 1459125 | x UNIPRO CCU3AW              | 0.079            | White  | 8 PCE / 1 BG |
| 1459225 | x UNIPRO CCU3AG              | 0.079            | Grey   | 8 PCE / 1 BG |
| 1459325 | x UNIPRO CCU3AB              | 0.079            | Black  | 8 PCE / 1 BG |

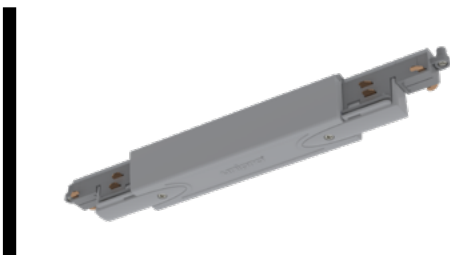
|         |                 |       |       |              |
|---------|-----------------|-------|-------|--------------|
| 1459126 | x UNIPRO CCU3BW | 0.079 | White | 8 PCE / 1 BG |
| 1459226 | x UNIPRO CCU3BG | 0.079 | Grey  | 8 PCE / 1 BG |
| 1459326 | x UNIPRO CCU3BB | 0.079 | Black | 8 PCE / 1 BG |



Please note! Earthing pictures taken from below.

## CONTROL-DALI MIDDLE CONNECTION UNIT CMCU3

Power supply option for Control-DALI track systems. Screw terminals for 1.5mm<sup>2</sup> - 2.5mm<sup>2</sup> wires.



| CODE    | PRODUCT<br>x = stock product | WGT.<br>kg / pce | COLOUR | PACKAGE      |
|---------|------------------------------|------------------|--------|--------------|
| 1459129 | x UNIPRO CMCU3W              | 0.159            | White  | 5 PCE / 1 BG |
| 1459228 | x UNIPRO CMCU3G              | 0.159            | Grey   | 5 PCE / 1 BG |
| 1459335 | x UNIPRO CMCU3B              | 0.159            | Black  | 5 PCE / 1 BG |

## CONTROL-DALI ADJUSTABLE CORNER CFC

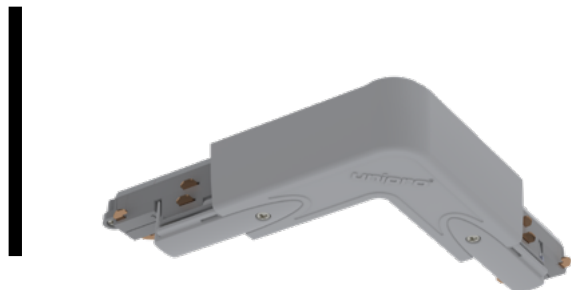
Power supply option for Control-DALI track systems. Screw terminals for 1.5mm<sup>2</sup> - 2.5mm<sup>2</sup> wires.



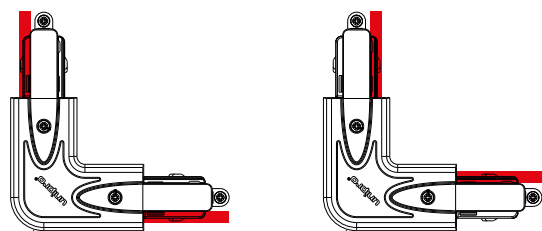
| CODE    | PRODUCT<br>x = stock product | WGT.<br>kg / pce | COLOUR | PACKAGE |
|---------|------------------------------|------------------|--------|---------|
| 1459154 | x UNIPRO CFC3 W              | 0.2              | White  | 1 PCE   |
| 1459152 | x UNIPRO CFC3 B              | 0.2              | Black  | 1 PCE   |

# CONTROL-DALI L-CORNER CLC3

Power supply option for Control-DALI track systems. Changeable earthing line position.  
Screw terminals for 1.5mm<sup>2</sup> - 2.5mm<sup>2</sup> wires.



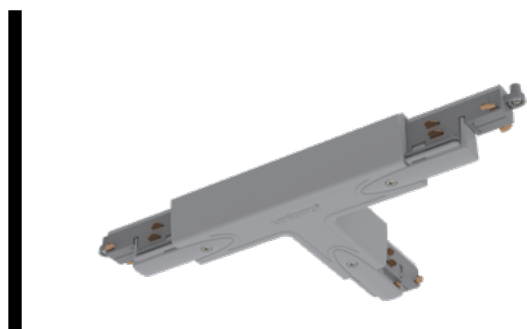
| CODE    | PRODUCT<br>x = stock product | WGT.<br>kg / pce | COLOUR | PACKAGE      |
|---------|------------------------------|------------------|--------|--------------|
| 1459153 | x UNIPRO CLC3W               | 0.158            | White  | 4 PCE / 1 BG |
| 1459245 | x UNIPRO CLC3G               | 0.158            | Grey   | 4 PCE / 1 BG |
| 1459345 | x UNIPRO CLC3B               | 0.158            | Black  | 4 PCE / 1 BG |



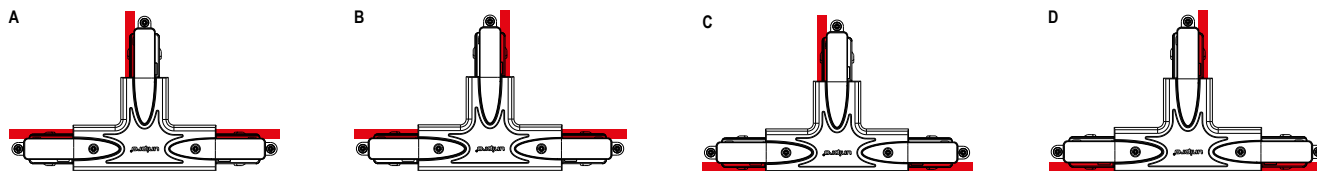
Please note! Earthing pictures taken from below.

# CONTROL-DALI T-PIECE CTA3

Power supply option for Control-DALI track systems. Four earthing options.  
Screw terminals for 1.5mm<sup>2</sup> - 2.5mm<sup>2</sup> wires.



| CODE    | PRODUCT<br>x = stock product | WGT.<br>kg / pce | COLOUR | PACKAGE      |
|---------|------------------------------|------------------|--------|--------------|
| 1459155 | x UNIPRO CTA3AW              | 0.24             | White  | 2 PCE / 1 BG |
| 1459255 | x UNIPRO CTA3AG              | 0.24             | Grey   | 2 PCE / 1 BG |
| 1459355 | x UNIPRO CTA3AB              | 0.24             | Black  | 2 PCE / 1 BG |
| 1459156 | x UNIPRO CTA3BW              | 0.24             | White  | 2 PCE / 1 BG |
| 1459256 | x UNIPRO CTA3BG              | 0.24             | Grey   | 2 PCE / 1 BG |
| 1459356 | x UNIPRO CTA3BB              | 0.24             | Black  | 2 PCE / 1 BG |
| 1459157 | x UNIPRO CTA3CW              | 0.24             | White  | 2 PCE / 1 BG |
| 1459257 | x UNIPRO CTA3CG              | 0.24             | Grey   | 2 PCE / 1 BG |
| 1459357 | x UNIPRO CTA3CB              | 0.24             | Black  | 2 PCE / 1 BG |
| 1459158 | x UNIPRO CTA3DW              | 0.24             | White  | 2 PCE / 1 BG |
| 1459258 | x UNIPRO CTA3DG              | 0.24             | Grey   | 2 PCE / 1 BG |
| 1459358 | x UNIPRO CTA3DB              | 0.24             | Black  | 2 PCE / 1 BG |

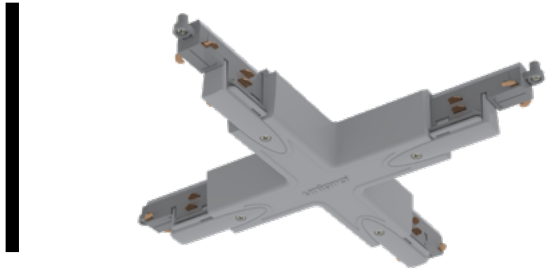


Please note! Earthing pictures taken from below.

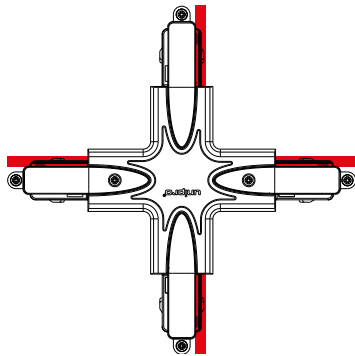


# CONTROL-DALI X-PIECE CXA3

Power supply option for Control-DALI track systems. Screw terminals for 1.5mm<sup>2</sup> - 2.5mm<sup>2</sup> wires.



| CODE    | PRODUCT<br>x = stock product | WGT.<br>kg / pce | COLOUR | PACKAGE      |
|---------|------------------------------|------------------|--------|--------------|
| 1459167 | x UNIPRO CXA3W               | 0.323            | White  | 1 PCE / 1 BG |
| 1459275 | x UNIPRO CXA3G               | 0.323            | Grey   | 1 PCE / 1 BG |
| 1459375 | x UNIPRO CXA3B               | 0.323            | Black  | 1 PCE / 1 BG |



Please note! Earthing picture taken from below.



## LUMINAIRE ADAPTER A75

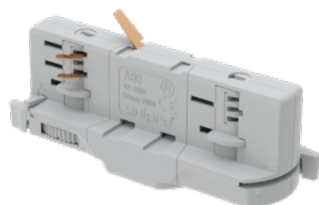
Rated values for 3-phase lighting track system: 6A, 250V | Pull strength 5kg, with L70 locking lever 7kg.



| CODE    | PRODUCT<br>x = stock product | WGT.<br>kg / pce | COLOUR | PACKAGE       |
|---------|------------------------------|------------------|--------|---------------|
| 1459014 | x UNIPRO A75W                | 0.034            | White  | 12 PCE / 1 BG |
| 1459016 | x UNIPRO A75G                | 0.034            | Grey   | 12 PCE / 1 BG |
| 1459015 | x UNIPRO A75B                | 0.034            | Black  | 12 PCE / 1 BG |

## LUMINAIRE ADAPTER A90

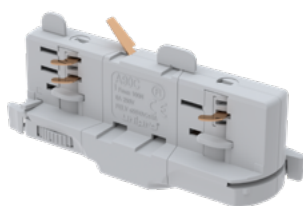
Rated values for 3-phase lighting track system: 6A, 250V | Pull strength 10kg.



| CODE    | PRODUCT<br>x = stock product | WGT.<br>kg / pce | COLOUR | PACKAGE      |
|---------|------------------------------|------------------|--------|--------------|
| 1459029 | x UNIPRO A90W                | 0.047            | White  | 8 PCE / 1 BG |
| 1459031 | x UNIPRO A90G                | 0.047            | Grey   | 8 PCE / 1 BG |
| 1459030 | x UNIPRO A90B                | 0.047            | Black  | 8 PCE / 1 BG |

## CONTROL-DALI LUMINAIRE ADAPTER A90C

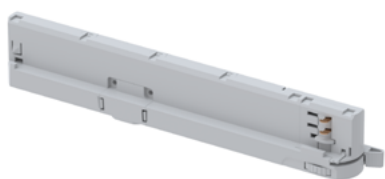
Rated values for Control-DALI system: 6A, 250V | FELV ≤50VAC ≤1A | Pull strength 10kg.



| CODE    | PRODUCT<br>x = stock product | WGT.<br>kg / pce | COLOUR | PACKAGE      |
|---------|------------------------------|------------------|--------|--------------|
| 1459026 | x UNIPRO A90CW               | 0.047            | White  | 8 PCE / 1 BG |
| 1459028 | x UNIPRO A90CG               | 0.047            | Grey   | 8 PCE / 1 BG |
| 1459027 | x UNIPRO A90CB               | 0.047            | Black  | 8 PCE / 1 BG |

## IN-TRACK DRIVER ADAPTER A201

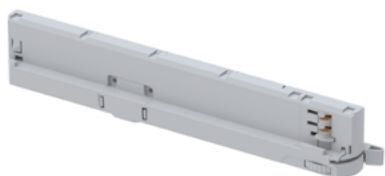
29-42 W, length 270 mm, for 3-phase lighting track systems



| CODE    | PRODUCT<br>x = stock product | WGT.<br>kg / pce | COLOUR | PACKAGE |
|---------|------------------------------|------------------|--------|---------|
| 1459374 | UNIPRO A201W                 | 0.07             | White  | 1 PCE   |
| 1459376 | UNIPRO A201B                 | 0.07             | Black  | 1 PCE   |
| 1459373 | UNIPRO A201G                 | 0.07             | Grey   | 1 PCE   |

## IN-TRACK DRIVER ADAPTER A204CA

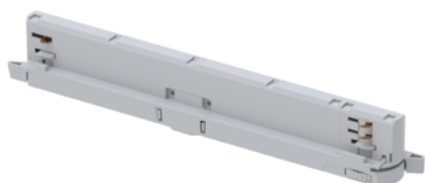
42 W, length 270 mm, for 3-phase lighting track systems including Casambi



| CODE    | PRODUCT<br>x = stock product | WGT.<br>kg / pce | COLOUR | PACKAGE |
|---------|------------------------------|------------------|--------|---------|
| 1459298 | UNIPRO A204CAW               | 0.07             | White  | 1 PCE   |
| 1459299 | UNIPRO A204CAB               | 0.07             | Black  | 1 PCE   |
| 1459300 | UNIPRO A204CAG               | 0.07             | Grey   | 1 PCE   |

## CONTROL-DALI IN-TRACK DRIVER ADAPTER A204C

42 W, length 270 mm, for 3-phase lighting track systems



| CODE    | PRODUCT<br>x = stock product | WGT.<br>kg / pce | COLOUR | PACKAGE |
|---------|------------------------------|------------------|--------|---------|
| 1459295 | UNIPRO A204CW                | 0.07             | White  | 1 PCE   |
| 1459296 | UNIPRO A204CB                | 0.07             | Black  | 1 PCE   |
| 1459297 | UNIPRO A204CG                | 0.07             | Grey   | 1 PCE   |

## POWER OUTLET ADAPTER A100

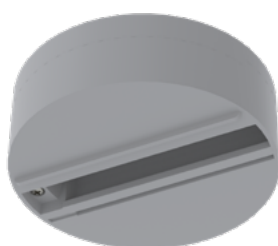
Power supply with 1-or 3-phase power, only compatible with unipro® 3-phase and Control-DALI lighting tracks. Cannot be used on DALI control.



| CODE    | PRODUCT<br>x = stock product | WGT.<br>kg / pce | COLOUR | PACKAGE      |
|---------|------------------------------|------------------|--------|--------------|
| 1459011 | x UNIPRO A100W               | 0.065            | White  | 6 PCE / 1 BG |
| 1459013 | x UNIPRO A100G               | 0.065            | Grey   | 6 PCE / 1 BG |
| 1459012 | x UNIPRO A100B               | 0.065            | Black  | 6 PCE / 1 BG |

## MONOPOINT FOR ADAPTER A75 MP

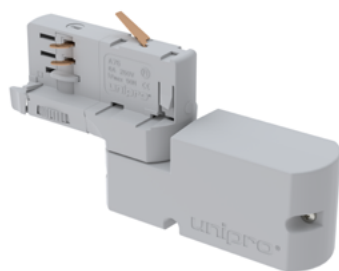
Rated values: 10A, 250V | Pull strength 5kg.



| CODE    | PRODUCT<br>x = stock product | WGT.<br>kg / pce | COLOUR | PACKAGE |
|---------|------------------------------|------------------|--------|---------|
| 1459040 | x UNIPRO MP W                | 0.1              | White  | 1 PCE   |
| 1459042 | x UNIPRO MP G                | 0.1              | Grey   | 1 PCE   |
| 1459041 | x UNIPRO MP B                | 0.1              | Black  | 1 PCE   |

## BLUETOOTH CONTROL UNIT A80

Rated values for 3-phase lighting track system: Pmax=70W, 240V | Pull strength 5kg. A80BT, wireless DALI or 0-10V controller. A80BT-TE, wireless Trailing Edge dimmer.



| CODE    | PRODUCT<br>x = stock product | WGT.<br>kg / pce | COLOUR | PACKAGE       |
|---------|------------------------------|------------------|--------|---------------|
| 1459017 | x UNIPRO A80BT W             | 0.1              | White  | 5 PCE / 1 SET |
| 1459019 | x UNIPRO A80BT G             | 0.1              | Grey   | 5 PCE / 1 SET |
| 1459018 | x UNIPRO A80BT B             | 0.1              | Black  | 5 PCE / 1 SET |

| CODE    | PRODUCT<br>x = stock product | WGT.<br>kg / pce | COLOUR | PACKAGE       |
|---------|------------------------------|------------------|--------|---------------|
| 1459020 | x UNIPRO A80BT-TE W          | 0.1              | White  | 5 PCE / 1 SET |
| 1459022 | x UNIPRO A80BT-TE G          | 0.1              | Grey   | 5 PCE / 1 SET |
| 1459021 | x UNIPRO A80BT-TE B          | 0.1              | Black  | 5 PCE / 1 SET |

## INSTALLATION TOOL T1L

Tool for attaching wires to lighting adapters A75, A90 and A90C.



| CODE    | PRODUCT<br>x = stock product | WGT.<br>kg / pce | COLOUR | PACKAGE |
|---------|------------------------------|------------------|--------|---------|
| 1459099 | x UNIPRO T1L                 | 0.1              | Grey   | 1 PCE   |

## AL-NIPPLE M10 ALN

Lighting fixture for lighting adapter, M10 thread. Available thread lengths: 8mm and 12mm.



| CODE    | PRODUCT<br>x = stock product | WGT.<br>kg / pce | COLOUR | PACKAGE        |
|---------|------------------------------|------------------|--------|----------------|
| 1459091 | x UNIPRO ALN10R8             | 0.005            | Grey   | 100 PCE / 1 BG |
| 1459092 | x UNIPRO ALN10R12            | 0.006            | Grey   | 100 PCE / 1 BG |

## COUNTER NUT FOR AL-NIPPLE NM10

M10 locknut for ALN10.



| CODE    | PRODUCT<br>x = stock product | WGT.<br>kg / pce | COLOUR | PACKAGE        |
|---------|------------------------------|------------------|--------|----------------|
| 1459428 | x UNIPRO NM10                | 0.01             | Grey   | 100 PCE / 1 BG |

## LOCKER FOR LUMINAIRE ADAPTER A75 L70

When locking lever L70 is used, will increase maximum load to 7kg.



| CODE    | PRODUCT<br>x = stock product | WGT.<br>kg / pce | COLOUR | PACKAGE        |
|---------|------------------------------|------------------|--------|----------------|
| 1459004 | x UNIPRO L70W                | 0.01             | White  | 100 PCE / 1 BG |
| 1459006 | x UNIPRO L70G                | 0.01             | Grey   | 100 PCE / 1 BG |
| 1459005 | x UNIPRO L70B                | 0.01             | Black  | 100 PCE / 1 BG |

## CABLE CLAMP CC70

Strain relief for lighting adapter.



| CODE    | PRODUCT<br>x = stock product | WGT.<br>kg / pce | COLOUR | PACKAGE        |
|---------|------------------------------|------------------|--------|----------------|
| 1459010 | x UNIPRO CC70                | 0.002            | Grey   | 100 PCE / 1 BG |

## QUICK CEILING BRACKET QCB

Tool-less snap installation to lighting tracks. Can be used with wire suspension set WS or threaded rod GT-6 with extension nut. Pull strength 15kg.



| CODE    | PRODUCT<br>x = stock product | WGT.<br>kg / pce | COLOUR | PACKAGE       |
|---------|------------------------------|------------------|--------|---------------|
| 1459421 | x UNIPRO QCB W               | 0.008            | White  | 10 PCE / 1 BG |
| 1459422 | x UNIPRO QCB G               | 0.008            | Grey   | 10 PCE / 1 BG |
| 1459423 | x UNIPRO QCB B               | 0.008            | Black  | 10 PCE / 1 BG |

## QUICK CONNECTOR QC3

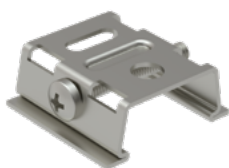
Twist to fasten to lighting track. M6 screw on top, grey, can be used with wire suspension sets, and threaded rods with extension nut. Pull strength 8kg.



| CODE    | PRODUCT<br>x = stock product | WGT.<br>kg / pce | COLOUR | PACKAGE       |
|---------|------------------------------|------------------|--------|---------------|
| 1459100 | x UNIPRO QC3G                | 0.008            | Grey   | 10 PCE / 1 BG |

## CEILING BRACKET CB3

Steel ceiling clamp. Can be attached to wire suspension sets and threaded rods. Pull strength 20kg.



| CODE    | PRODUCT<br>x = stock product | WGT.<br>kg / pce | COLOUR | PACKAGE       |
|---------|------------------------------|------------------|--------|---------------|
| 1459401 | x UNIPRO CB3W                | 0.014            | White  | 10 PCE / 1 BG |
| 1459402 | x UNIPRO CB3G                | 0.014            | Grey   | 10 PCE / 1 BG |
| 1459403 | x UNIPRO CB3B                | 0.014            | Black  | 10 PCE / 1 BG |

## CEILING BRACKET FOR T-BAR CB3 T-BAR

Steel 24mm T-bar clamp. Pull strength 5kg.



| CODE    | PRODUCT<br>x = stock product | WGT.<br>kg / pce | COLOUR | PACKAGE       |
|---------|------------------------------|------------------|--------|---------------|
| 1459451 | x UNIPRO CB3W T-BAR          | 0.022            | White  | 10 PCE / 1 BG |
| 1459452 | x UNIPRO CB3G T-BAR          | 0.022            | Grey   | 10 PCE / 1 BG |
| 1459453 | x UNIPRO CB3B T-BAR          | 0.022            | Black  | 10 PCE / 1 BG |

## PENDANT BRACKET PB

Steel pendant bracket. Used with hooked wire suspension set WS40H, or wire set WSL40. Pull strength 20kg.



| CODE    | PRODUCT<br>x = stock product | WGT.<br>kg / pce | COLOUR | PACKAGE       |
|---------|------------------------------|------------------|--------|---------------|
| 1459407 | x UNIPRO PB W                | 0.02             | White  | 10 PCE / 1 BG |
| 1459408 | x UNIPRO PB G                | 0.02             | Grey   | 10 PCE / 1 BG |
| 1459409 | x UNIPRO PB B                | 0.02             | Black  | 10 PCE / 1 BG |

## PENDANT COUPLER PC

Steel pendant bracket. Used on lighting track joints with hooked wire suspension set WS40H or WSL40.  
Pull strength 20kg.



| CODE    | PRODUCT<br>x = stock product | WGT.<br>kg / pce | COLOUR | PACKAGE       |
|---------|------------------------------|------------------|--------|---------------|
| 1459431 | x UNIPRO PC W                | 0.085            | White  | 10 PCE / 1 BG |
| 1459432 | x UNIPRO PC G                | 0.085            | Grey   | 10 PCE / 1 BG |
| 1459433 | x UNIPRO PC B                | 0.085            | Black  | 10 PCE / 1 BG |

## ADJUSTABLE PENDANT BRACKET PBA

Adjustment range 0-30mm. Attached to threaded rods. Pull strength 20kg.



| CODE    | PRODUCT<br>x = stock product | WGT.<br>kg / pce | COLOUR | PACKAGE       |
|---------|------------------------------|------------------|--------|---------------|
| 1459404 | x UNIPRO PBA W               | 0.035            | White  | 10 PCE / 1 BG |
| 1459405 | x UNIPRO PBA G               | 0.035            | Grey   | 10 PCE / 1 BG |
| 1459406 | x UNIPRO PBA B               | 0.035            | Black  | 10 PCE / 1 BG |

## CEILING BRACKET WITH CUP CBC

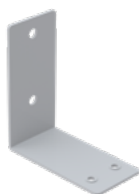
Can be used with threaded rod. Pull strength 10kg.



| CODE    | PRODUCT<br>x = stock product | WGT.<br>kg / pce | COLOUR | PACKAGE       |
|---------|------------------------------|------------------|--------|---------------|
| 1459434 | x UNIPRO CBC W               | 0.016            | White  | 10 PCE / 1 BG |
| 1459435 | x UNIPRO CBC B               | 0.016            | Black  | 10 PCE / 1 BG |

## WALL BRACKET WB

Steel wall bracket. Used with ceiling bracket CB3. Pull strength 3kg.



| CODE    | PRODUCT<br>x = stock product | WGT.<br>kg / pce | COLOUR | PACKAGE       |
|---------|------------------------------|------------------|--------|---------------|
| 1459436 | x UNIPRO WB W                | 0.045            | White  | 10 PCE / 1 BG |
| 1459437 | x UNIPRO WB B                | 0.045            | Black  | 10 PCE / 1 BG |

## SUSPENSION CLAMP SC3

Pull strength 10kg, for 3-phase and Control-DALI lighting tracks.



| CODE    | PRODUCT<br>x = stock product | WGT.<br>kg / pce | COLOUR | PACKAGE       |
|---------|------------------------------|------------------|--------|---------------|
| 1459440 | x UNIPRO SC3W                | 0.065            | White  | 10 PCE / 1 BG |
| 1459441 | x UNIPRO SC3G                | 0.065            | Grey   | 10 PCE / 1 BG |
| 1459442 | x UNIPRO SC3B                | 0.065            | Black  | 10 PCE / 1 BG |

## ADJUSTABLE WIRE SUSPENSION SET WS

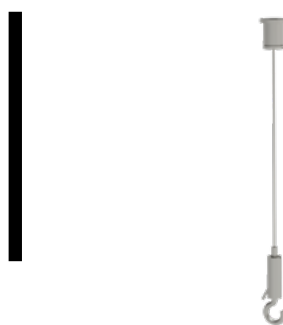
Wire suspension set for CB3, QC3 and QCB brackets. Pull strength 15kg, WS40 W pull strength 12kg.



| CODE    | PRODUCT<br>x = stock product | WGT.<br>kg / pce | LENGTH<br>mm | COLOUR | PACKAGE      |
|---------|------------------------------|------------------|--------------|--------|--------------|
| 1459410 | x UNIPRO WS15                | 0.054            | 1500         | Grey   | 1 PCE / 1 BG |
| 1459415 | x UNIPRO WS15 B              | 0.05             | 1500         | Black  | 1 PCE / 1 BG |
| 1459411 | x UNIPRO WS40                | 0.08             | 4000         | Grey   | 1 PCE / 1 BG |
| 1459416 | x UNIPRO WS40 B              | 0.08             | 4000         | Black  | 1 PCE / 1 BG |
| 1459417 | x UNIPRO WS40 W              | 0.08             | 4000         | White  | 1 PCE / 1 BG |
| 1459412 | x UNIPRO WS60                | 0.11             | 6000         | Grey   | 1 PCE / 1 BG |

## ADJUSTABLE WIRE SUSPENSION SET WITH HOOK WS40H

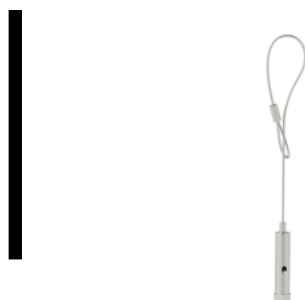
Wire suspension set for PB and PC brackets, pull strength 10kg.



| CODE    | PRODUCT<br>x = stock product | WGT.<br>kg / pce | LENGTH<br>mm | COLOUR | PACKAGE      |
|---------|------------------------------|------------------|--------------|--------|--------------|
| 1459414 | x UNIPRO WS40H               | 0.08             | 4000         | Grey   | 1 PCE / 1 BG |

## ADJUSTABLE WIRE SET WITH LOOP WIRE WS40L

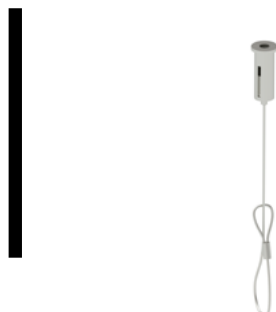
Wire suspension set for CB3, QC3 and QCB brackets, pull strength 15kg.



| CODE    | PRODUCT<br>x = stock product | WGT.<br>kg / pce | LENGTH<br>mm | COLOUR | PACKAGE      |
|---------|------------------------------|------------------|--------------|--------|--------------|
| 1459128 | x UNIPRO WS40L               | 0.05             | 4000         | Grey   | 1 PCE / 1 BG |
| 1459130 | x UNIPRO WS40L B             | 0.05             | 4000         | Black  | 1 PCE / 1 BG |

## WIRE SET WITH ADJUSTABLE CEILING ATTACHMENT AND LOOP WIRE WSL40

Wire suspension set for PB and PC brackets, pull strength 15kg.



| CODE    | PRODUCT<br>x = stock product | WGT.<br>kg / pce | LENGTH<br>mm | COLOUR | PACKAGE      |
|---------|------------------------------|------------------|--------------|--------|--------------|
| 1459135 | x UNIPRO WSL40               | 0.05             | 4000         | Grey   | 1 PCE / 1 BG |
| 1459136 | x UNIPRO WSL40 B             | 0.05             | 4000         | Black  | 1 PCE / 1 BG |



## Ø1.5 MM WIRE WITH LOOP WL40

Ø1.5mm wire with loop, pull strength 15 kg, to be used with e.g. a WG wire gripper.



| CODE    | PRODUCT<br>x = stock product | WGT.<br>kg / pce | LENGTH<br>mm | COLOUR | PACKAGE      |
|---------|------------------------------|------------------|--------------|--------|--------------|
| 1459146 | x UNIPRO WL40                | 0.05             | 4000         | Grey   | 1 PCE / 1 BG |
| 1459150 | x UNIPRO WL40 B              | 0.05             | 4000         | Black  | 1 PCE / 1 BG |

## ADJUSTABLE WIRE GRIPPER WG

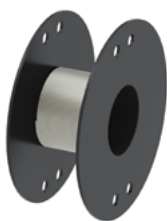
Cable lock for Ø1.5mm wires, pull strength 20kg.



| CODE    | PRODUCT<br>x = stock product | WGT.<br>kg / pce | COLOUR | PACKAGE |
|---------|------------------------------|------------------|--------|---------|
| 1459140 | x UNIPRO WG                  | 0.01             | Grey   | 50 PCE  |
| 1459145 | x UNIPRO WG B                | 0.01             | Black  | 50 PCE  |

## WIRE REEL, Ø=1.5MM, L=50M WR

50 metre Ø1.5 mm cable spool, steel grey, pull strength 15 kg, to be used with e.g. a WG wire gripper.



| CODE    | PRODUCT<br>x = stock product | WGT.<br>kg / pce | LENGTH<br>mm | COLOUR | PACKAGE      |
|---------|------------------------------|------------------|--------------|--------|--------------|
| 1459127 | x UNIPRO WR                  | 0.8              | 50000        | Grey   | 1 PCE / 1 BG |

## SLIDING SUSPENSION CLAMP FOR MEK SSC

Plastic sliding suspension clamp for MEK® lighting support rails, pull strength 10kg.



| CODE    | PRODUCT<br>x = stock product | WGT.<br>kg / pce | COLOUR | PACKAGE     |
|---------|------------------------------|------------------|--------|-------------|
| 1459105 | x UNIPRO SSC                 | 0.025            | White  | 10 PCE / BG |

## THREADED ROD GT-6

Threaded rods GT are used for suspending lighting track systems.



| CODE    | PRODUCT<br>x = stock product | WGT.<br>kg / pce | LENGTH<br>mm | COLOUR | PACKAGE         |
|---------|------------------------------|------------------|--------------|--------|-----------------|
| 1459420 | GT-6 L=1000 EG               | 0.15             | 1000         | Grey   | 20 PCE / 20 MTR |

## CASING TUBE SS

White plastic protective sleeves SS are used to cover threaded rods GT.



| CODE    | PRODUCT<br>x = stock product | WGT.<br>kg / pce | COLOUR | PACKAGE         |
|---------|------------------------------|------------------|--------|-----------------|
| 1459426 | SS-6 W                       | 5.04             | White  | 1 PCE / 250 MTR |

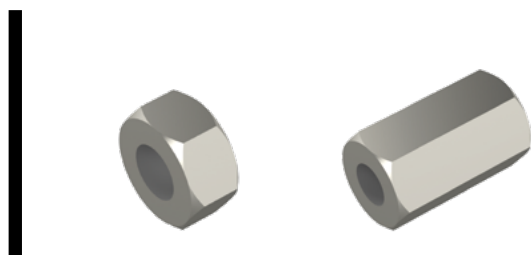
## SUSPENSION HOOK SH

Pull strength 1kg, for SC3 suspension base.



| CODE    | PRODUCT<br>x = stock product | WGT.<br>kg / pce | COLOUR | PACKAGE       |
|---------|------------------------------|------------------|--------|---------------|
| 1459443 | x UNIPRO SH                  | 0.002            | Grey   | 10 PCE / 1 BG |

## NUT MU / EXTENSION NUT JM



| CODE    | PRODUCT<br>x = stock product | WGT.<br>kg / pce | COLOUR | PACKAGE       |
|---------|------------------------------|------------------|--------|---------------|
| 1459427 | MU M6 EG                     | 0.01             | Grey   | 10 PCE / 1 BG |

| CODE    | PRODUCT<br>x = stock product | WGT.<br>kg / pce | COLOUR | PACKAGE       |
|---------|------------------------------|------------------|--------|---------------|
| 1459425 | JM M6 EG                     | 0.01             | Grey   | 10 PCE / 1 BG |

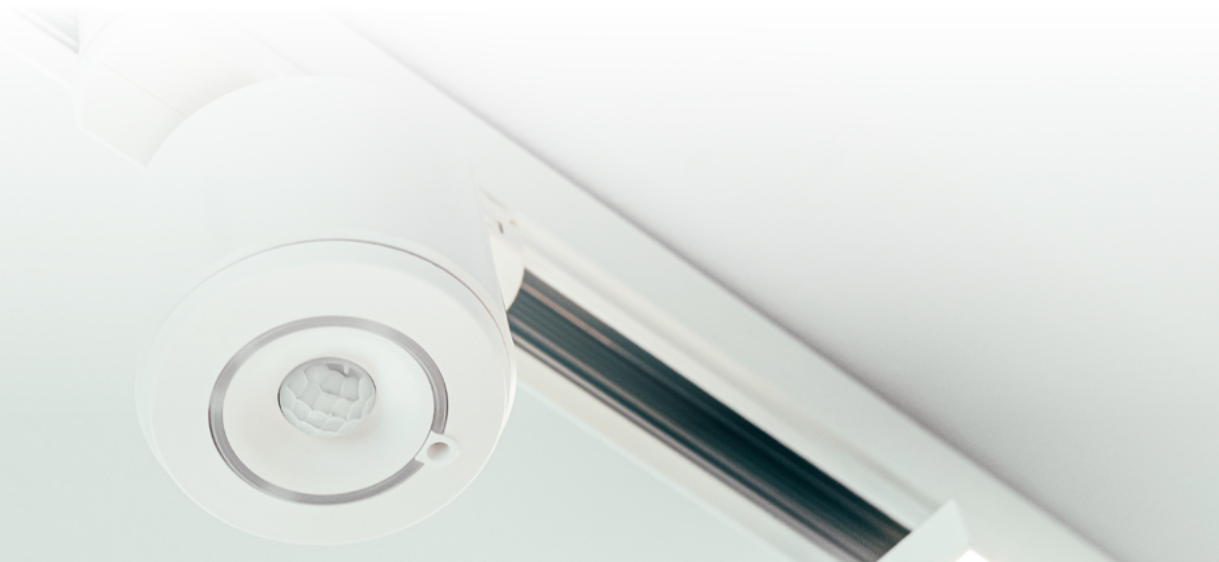


# Helvar

## **Intelligence of ActiveAhead® Combined With the Benefits of DALI Addressing**

Helvar's ActiveAhead® is now available with UNIPRO 3-phase DALI track system.

ActiveAhead® now connects to DALI devices and the benefits of this can now be brought into Unipro DALI lighting track solution.



# 5609

ActiveAhead® Node Advanced for DALI



| CODE | PRODUCT           | PACKAGE |
|------|-------------------|---------|
|      | x = stock product |         |

|        |             |       |
|--------|-------------|-------|
| 113165 | HELVAR 5609 | 1 PCE |
|--------|-------------|-------|

# 320TR & 320BTR

PIR Sensor + A90C, white for DALI

PIR Sensor + A90C, black for DALI



| CODE | PRODUCT           | PACKAGE |
|------|-------------------|---------|
|      | x = stock product |         |

|        |               |       |
|--------|---------------|-------|
| 113166 | HELVAR 320TR  | 1 PCE |
| 113167 | HELVAR 320BTR | 1 PCE |

# 321TR & 321BTR

MULTISensor + A90C, white for DALI

MULTISensor + A90C, black for DALI



| CODE | PRODUCT           | PACKAGE |
|------|-------------------|---------|
|      | x = stock product |         |

|        |               |       |
|--------|---------------|-------|
| 113168 | HELVAR 321TR  | 1 PCE |
| 113169 | HELVAR 321BTR | 1 PCE |

# 322TR & 322BTR

High Bay MULTISensor + A90C, white for DALI

High Bay MULTISensor + A90C, black for DALI



| CODE | PRODUCT           | PACKAGE |
|------|-------------------|---------|
|      | x = stock product |         |

|        |               |       |
|--------|---------------|-------|
| 113170 | HELVAR 322TR  | 1 PCE |
| 113171 | HELVAR 322BTR | 1 PCE |

## 320D2TR & 320BD2TR

PIR Sensor (DALI-2) + A90C, white  
PIR Sensor (DALI-2) + A90C, black



CODE      PRODUCT  
            x = stock product

| CODE   | PRODUCT         | PACKAGE |
|--------|-----------------|---------|
| 113172 | HELVAR 320D2TR  | 1 PCE   |
| 113173 | HELVAR 320BD2TR | 1 PCE   |

## 321D2TR & 321BD2TR

MULTISensor (DALI-2) + A90C, white for DALI  
MULTISensor (DALI-2) + A90C, black for DALI



CODE      PRODUCT  
            x = stock product

| CODE   | PRODUCT         | PACKAGE |
|--------|-----------------|---------|
| 113174 | HELVAR 321D2TR  | 1 PCE   |
| 113175 | HELVAR 321BD2TR | 1 PCE   |

## 322D2TR & 322DTRB

High Bay MULTISensor (DALI-2) + A90C, white for DALI  
High Bay MULTISensor (DALI-2) + A90C, black for DALI



CODE      PRODUCT  
            x = stock product

| CODE   | PRODUCT        | PACKAGE |
|--------|----------------|---------|
| 113176 | HELVAR 322D2TR | 1 PCE   |
| 113177 | HELVAR 322DTRB | 1 PCE   |







making  
your  
lights  
shine

unipro®

UNIPRO OY LTD

ITÄPORTINTIE 1, 13430 HÄMEENLINNA, FINLAND  
+358 207 450 800  
WWW.UNIPRO.FI